

Service-learning in Higher Education

Case-Study: Steps in the Institutionalisation Process at KU Leuven (Catholic University Leuven, Belgium)

Nicolas Standaert, Maaike Mottart, Sara Vantournhout

Case study: Context

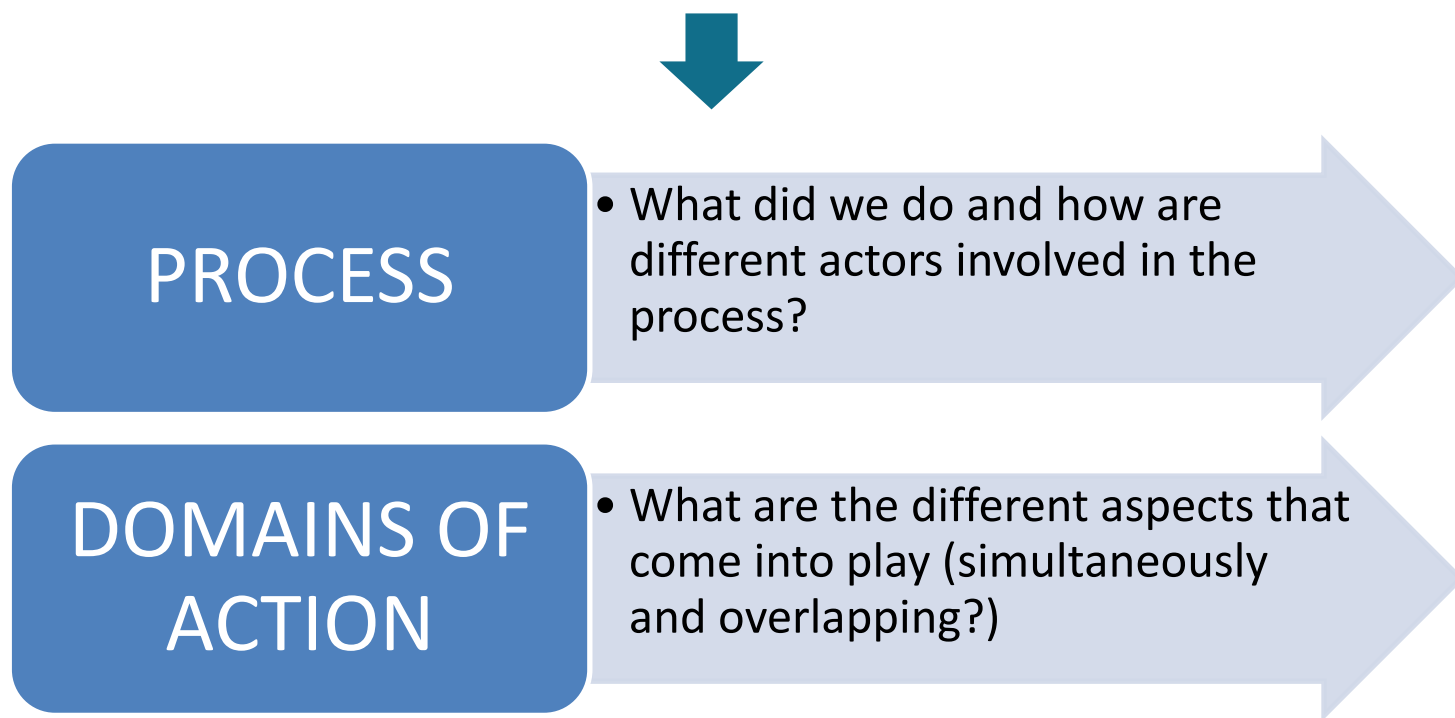
- **KU LEUVEN** 'private' university (1425)
> 50.000 (Dutch speaking) students
 - 15 Faculties: study programmes designed by Faculties and Departments
 - Service-Learning was/is basically unknown: started only 4-5 years ago
 - Initiated by individuals in a very large institution
-
- Initial start: small survey of what was available without being called 'Service-learning': snowball effect



Outset

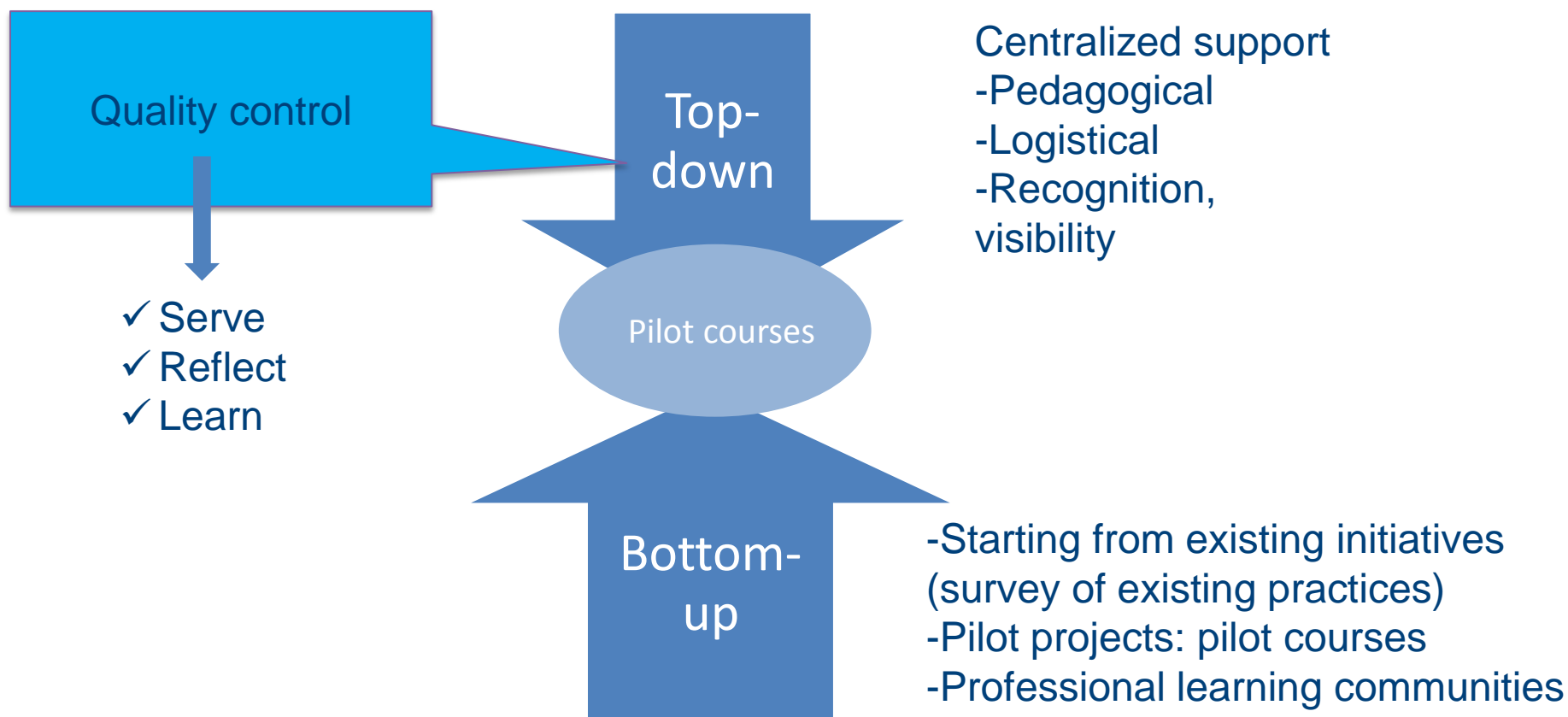
- **PREMISES:**
 - Academic: embed service-learning in academic courses
 - Choice between university-wide course or individual courses
 - It is very difficult to create a new course
 - Once a course is accepted by the local education council, it lasts for 20 years
- **ACTIONS:**
 - Spreading the word: information and visibility
 - Bottom-up: work with those who are willing to do so: enthusiasm
 - Support them to create a new course (pedagogic and logistic)

Final goal: sustainable embedding in the structure and culture of the university

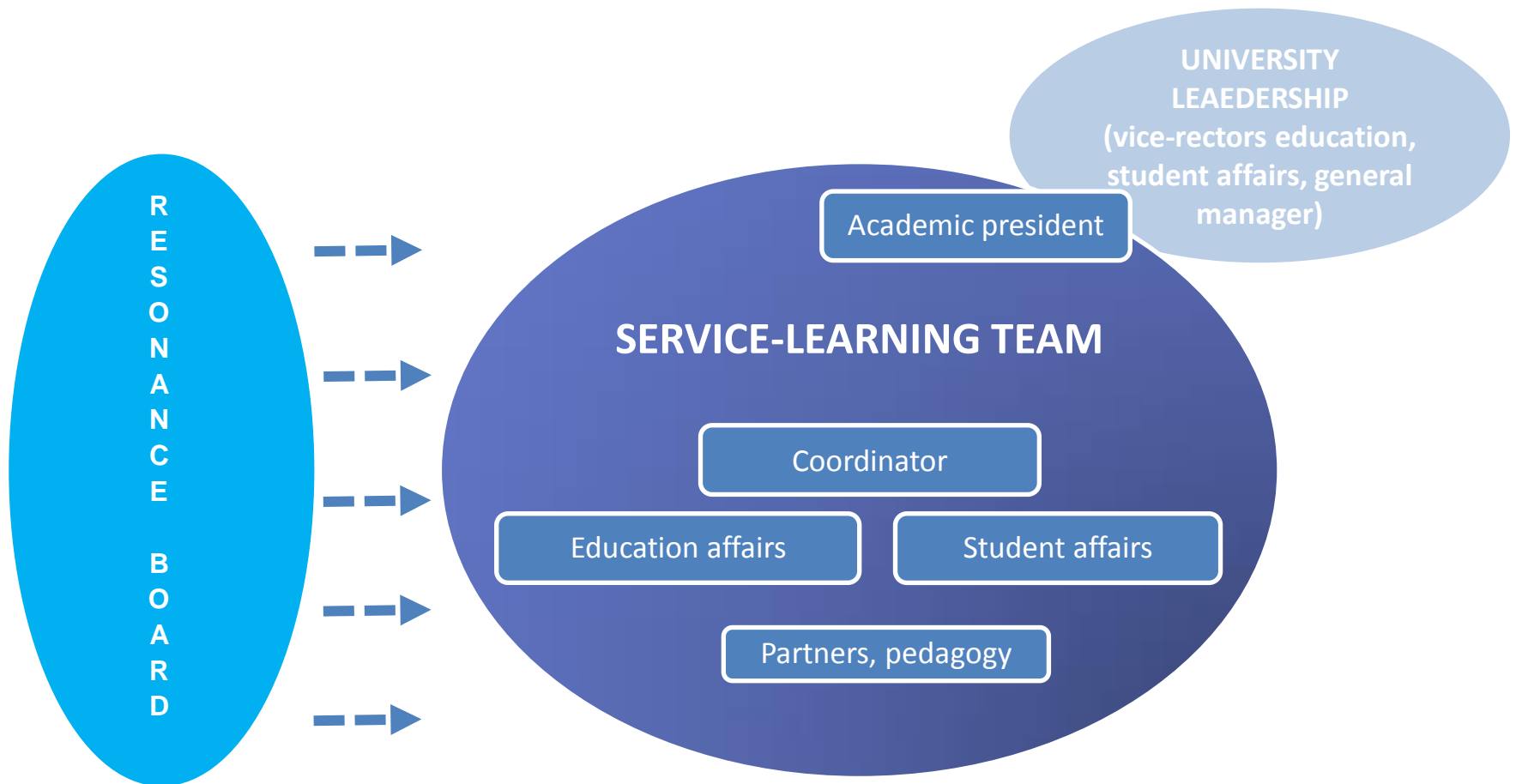


Mottart, Maaike. (2017). Institutionele inbedding van service-learning: enkele handvaten voor een duurzame verankering. *Tijdschrift voor Onderwijsrecht en Onderwijsbeleid*, 3, 182-194.

PROCESS: Interplay bottom-up and top-down



PROCESS: Structure KU Leuven: Service-learning team



ACTIONS: Support for pilot courses in service-learning

- **JUNE:**
 - Call for pilot projects: application process: course description and commitment (study program integration)
- **SEPTEMBER - OCTOBER:**
 - Acceptance of project stake-in meeting to clarify mutual expectations and necessary adjustments: “serve – reflect – learn”
- **NOVEMBER – DECEMBER:**
 - Preparation of learning agreement for ECTS (European Credit Transfer System): including learning goals and personal formation (values) goals
 - Presentation at Resonance Board
 - Acceptance by local teaching council
- **JANUARY:**
 - Acceptance by central education council
- **FEBRUARY-MAY:**
 - Teacher training sessions for reflection, grading, ...
 - Network with other service-learning courses
 - Facilitating partnerships
 - Incentive: 3500 Euro for new / 1500 for revised course
- **SEPTEMBER:**
 - Start of new course



ACTIONS: Online modules for all courses (in Dutch)

- **WHAT IS SERVICE-LEARNING?**
 - Serve – reflect - learn
- **REFLECTION IN SERVICE-LEARNING**
 - Introduction to pedagogy of service-learning and practical examples
- **INCLUSION AND DIVERSITY**
 - Stereotypes and prejudices
 - Discrimination and stigmatisation
 - Micro-agressions
- **SOCIAL PARTNERS**
 - Working together with social partners
 - Communication with partners
 - Types of social partners
- **COMMUNICATION**
 - Verbal and non-verbal communication
 - Listening
 - Interaction
- **INTERCULTURAL INTERACTION**
 - In course of development



© Rawpixel.com/Shutterstock.com

DOMAINS OF ACTIONS

INFORMATION

NETWORKING

PROFESSIONALISATION

PILOT COURSES

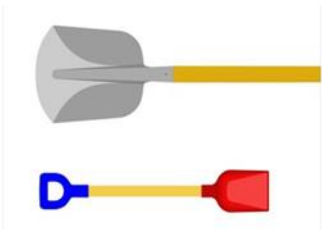
RESEARCH

Serve, reflect, learn

25 COURSES in 4 YEARS



Pharmacy



**Community
archeology**



Social economy



**Criminology
+ theology**



History

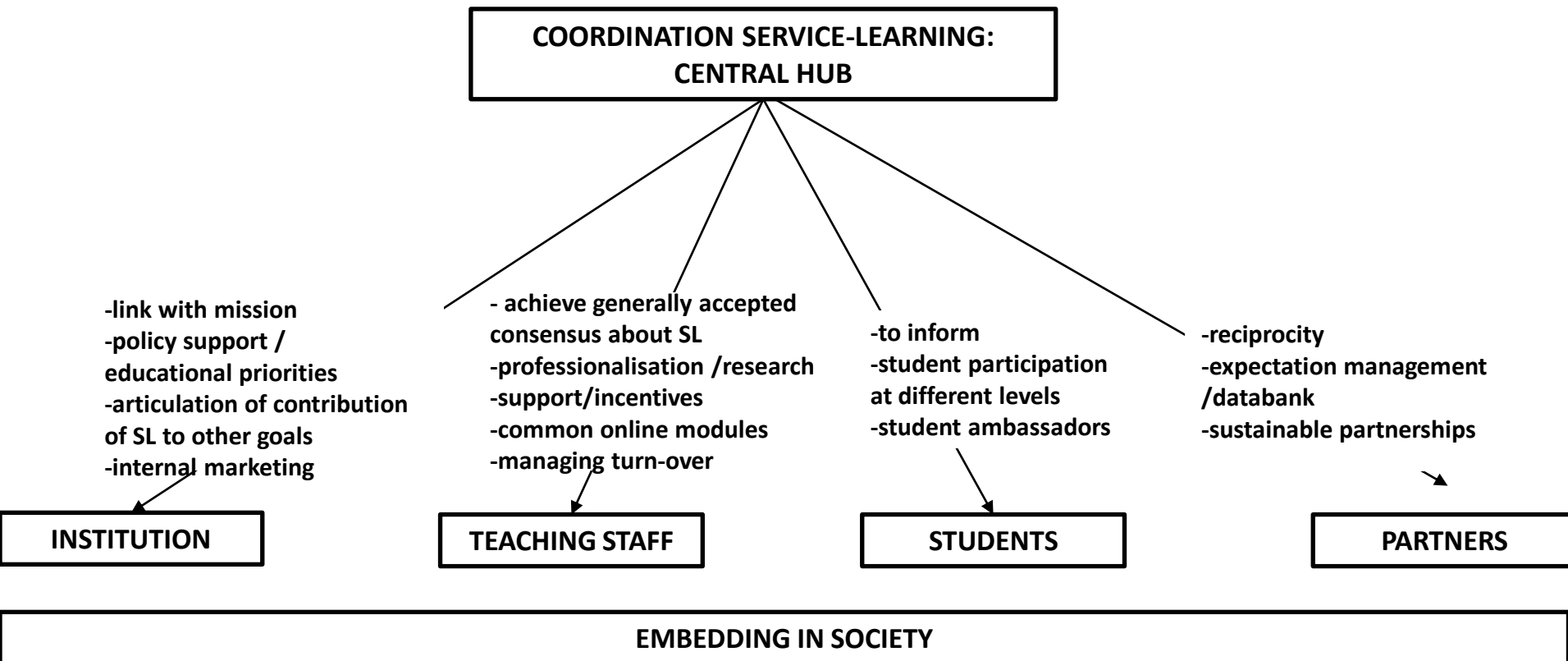


**Teacher
training**



**Engineering
Sciences**

Coordinating role at central level



Bringle, R. en J. Hatcher, "Implementing Service-Learning in Higher Education", *The Journal of Higher Education* 67:2 (1996), p. 221-239

Vogel, A.L., Seifer, S.D. & S.B. Gelmon, "What Influences the Long-Term Sustainability of Service-Learning? Lessons from Early Adaptors", *Michigan Journal of Community Service Learning* 17:1 (2010), pp. 59-76.

EDGE-rubric

Conclusion

Conclusion: Start from existing initiatives and enthusiasm

BUT

“Keep the definition straight” (service-learning should not become an umbrella term)

KU LEUVEN

Serve, reflect, learn

Want to find out more?

KU LEUVEN

Search in KU Leuven



SERVICE-LEARNING

[NL](#) | [EN](#)

[WHAT IS SERVICE-LEARNING?](#)

[SERVICE-LEARNING AT KU LEUVEN](#)

[SERVICE-LEARNING WORLDWIDE](#)

[CONTACT](#)

[NEWS](#)

[Home](#)

SERVICE-LEARNING



GET STARTED WITH SERVICE-LEARNING?

Join 25 existing service-learning courses at the KU Leuven and make a difference! Submit your proposal for a pilot project and receive pedagogical, logistical and financial support.

The deadline for application is September 8, 2020 for courses starting in academic year 2021-2022.

[READ MORE](#)



Record number of new Service-learning courses!

In academic year 2020-2021, ten new Service-learning courses, spread over three campuses and six faculties, will be offered at the KU Leuven.

[READ MORE](#)

<https://www.kuleuven.be/english/education/sl>

